



STARTERS

V1 Tempeh Mendoan (3 pcs) A,F,P,R,T,U

Deep fried crunchy tempe coated with savoury batter. Served with kecap manis dip A,F,O **4,2**

V2 Risoles Ragout (1 pc) A,C,G,S

Indonesian pastry covered with breadcrumbs and filled with bechamel sauce and vegetables **3,0**

V3 Gado-gado Vorspeise C,E,F

Indonesian salad of lettuce, tempeh, potatoes, egg and bean sprouts tossed with peanut sauce **5,0**

V4 Fried Lumpia (2 pcs) A,B,D,F

Deep fried Indonesian spring rolls, with minced beef and vegetables as fillings **4,5**



V5 Satay Vorspeise A,E,F,O

3 pcs of skewers, achar and peanut sauce on top

Grilled Chicken **10,5**

Grilled Tempeh **9,5**

V6 Lodeh Sapi H,L,M,R,T,U

Beef vegetable stewed in coconut curry soup

 vegetarian  vegan

MAIN

01 Grandma's Ayam Woku

Tenderly cooked chicken in various fragrant spices such as lemongrass, lime leaves and leek **11,9**



02 Yellow Rice Set/ Nasi Kuning Set A,C,F,H,O,P,R,S,T,U

Indonesian rice cooked with tumeric, served with tender roasted chicken, tempeh orek, sauteed vegetable and egg balado

incl. Sambal upon request **12,9**



03 Singapore Satay A,E,F,O

3 pcs of skewers, achar and peanut sauce on top

Grilled Chicken **11,9**

Grilled Tempeh **10,9**



04 Salted Egg Chicken/Tofu A,C,F,G,O

Deep fried chicken cutlet / Tofu, tossed with aromatic savory sweet salted egg yolk sauce.

Fried Chicken **12,5**

Fried Tofu AVAILABLE SOON **12,5**

05 Gado-gado C,E,F

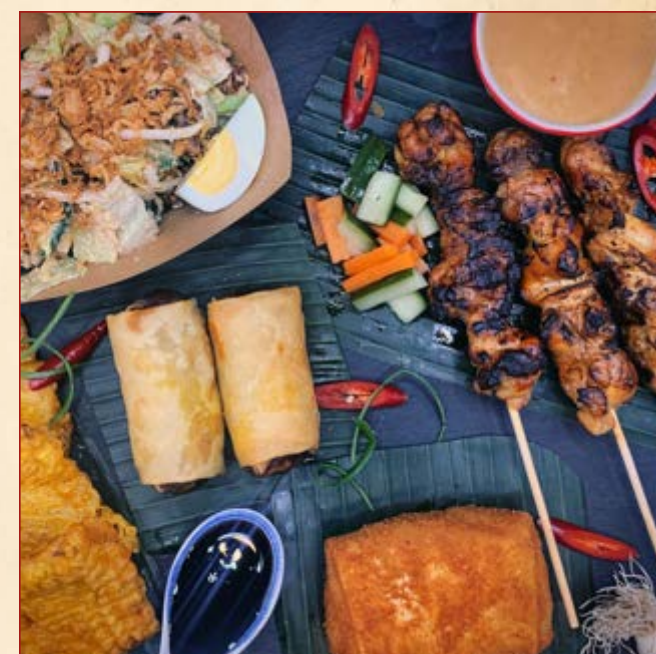
Indonesian salad of lettuce, tempeh, potatoes, egg and bean sprouts tossed with peanut sauce **9,9**

ADD-ON

X1 Plain rice **2,0**

X2 Yellow rice **3,0**

X3 Achar **2,5**



X4 Sambal Terasi **1,5**

X5 Peanut Sauce A,E,F,O **3,5**





daily warteg

MENU



daily warteg

BEVERAGES

A1 Indonesian Tea 0,30 L

2,5€

A2 Hot Kopi¹¹

AVAILABLE SOON

A3 Hot Milo 0,30 L^G

3,9€

A4 Teh Botol 0,25L

3,8€

A5 Iced Bandung^{1,G}

AVAILABLE SOON

A6 Mineral Water 0,5 L

2,8€

A7 Soft Drink 0,5 L

3,8€

Coca-cola^{1,11}

Cola light^{1,8,9,10,11}

Cola Zero^{1,8,9,10,11}

Sprite

Mezzo Mix^{1,11}

ClubMate^{1,11}



ice extra +0,5€



daily warteg

ALLERGEN & ZUSATZSTOFFEN

A - Glutenhaltiges Getreide

B - Krebstiere

C - Eier

D - Fisch

E - Erdnüsse

F - Soja

G - Milch

H - Schalenfrüchte

I - Sellerie

J - Senf

K - Sesam

L - SO₂ u. SO₃

M - Lupinen

N - Weichtiere

O - Spuren von Laktose

P - Spuren von Nüsse

Q - Spuren von glutenhaltigem Getreide

R - Spuren von Ei

S - Spuren von Soja

T - Spuren von Senf

U - Spuren von Sellerie

1 - mit Farbstoff

2 - mit Konservierungsstoff

3 - mit Antioxidationsmittel

4 - mit Geschmacksverstärker

5 - geschwefelt

6 - mit Phosphat

7 - mit Süßungsmittel Saccharin

8 - mit Süßungsmittel Aspartam
(enth. Phenylalaninquelle)

9 - mit Süßungsmittel Acesulfam

10 - mit Süßungsmittel Cyclamat

11 - koffeinhaltig

12 - chininhaltig

13 - gewachst



daily warteg

ALLERGENES & FOOD ADDITIVES

- A - Gluten
- B - Shellfishes
- C - Eggs
- D - Fish
- E - Nuts
- F - Soy
- G - Milk
- H - Nuts / pulse
- I - Celery
- J - Mustard
- K - Sesame seeds
- L - SO₂ / SO₃
- M - Lupine
- N - Molluscs
- O - Traces of lactose
- P - Traces of nuts
- Q - Traces of gluten
- R - Traces of eggs
- S - Traces of soy
- T - Traces of mustard
- U - Traces of celery
- 1 - with colouring
- 2 - with preservatives
- 3 - with anti-oxidiser
- 4 - with flavour enhancers
- 5 - sulfurized
- 6 - with phosphate
- 7 - with saccharin
- 8 - with Aspartam
(cont. Phenylalaninquelle)
- 9 - with Acesulfam
- 10 - with Cyclamat
- 11 - caffeinated
- 12 - cont. chinin
- 13 - waxed